

# Clippings

## Newsletter for Treetops



### UPCOMING DATES

EDITION 170

**Tuesday 18th July**

First Day of Term 3

**Monday 24th - Friday 29th July**

Parent/Teacher/Student Interviews

**Friday 11th August**

Science Fair

**Friday 11th - Wednesday 16th**

**August**

Scholastic Book Fair

**Monday 14th - Friday 18th August**

Science Week

**Monday 21st - Friday 25th August**

Book Week

**Tuesday 22nd August**

Book Character Day



**Extra Large Edition** - as it is the end of the term, we have a lot to share with you!

You may need to click 'view entire message' at the bottom of this email to see everything.

If you no longer wish to receive Clippings, there is an unsubscribe link at the end of this email.

---

## From the Principal

### The Very Talented Mr Beebe!

Every now and then an extraordinary person crosses my path. People with gifts and talents beyond the norm or expectation. Usually, these people are students and very occasionally they are adults. In June of 2021 an old friend of Mary Pollard was looking to get back into teaching. He was 'sold' to me as a former TAFE lecturer and small business owner (a mowing shop). I was a little skeptical at first, but we had a niche position that looked like a fit.

Over the last two years Daniel Beebe, 'Dan', has worked across our school from Kindergarten to Year 12. In my 26 years of working in education, I suspect he is the most broadly skilled teacher I have had the pleasure of working with.

Unfortunately for us, the very talented Mr Beebe is also held in high regard by TAFE and they have successfully lured him back into their orbit with an amazing job offer. It has been a difficult decision for Dan, but we will be saying goodbye to him and want to wish him all the best.

We are well into sourcing a new teacher to cover Dan's current workload.

I hope you all have a lovely winter break and look forward to seeing you soon.

*Stuart Harris*





# Special Events



## Pyjama Day









# Secondary School



## Science

Our new lab space is abuzz with scientific creativity as students dive into their Science Fair projects. From exploring the mysteries of the universe to investigating the wonders of biology, our talented young minds are hard at work.

The Science Fair offers a platform for students to showcase their passion for scientific inquiry. It's an opportunity to demonstrate critical thinking, experimentation, and presentation skills. We can't wait to see the incredible projects our students produce but some topics include rockets, crystals, solutions, electricity, solar power, plant growth, and more! Mark your calendars for the Science Fair exhibition on Friday 18th August.

Let's celebrate the power of curiosity and applaud our budding scientists!





The Year 11 students are immersed in studying body systems, unravelling the complexities that sustain living organisms. From the respiratory to nervous systems, they are gaining profound insights into the human body.

Meanwhile, our Year 12 students are nearing the completion of their reproduction unit, preparing to embark on an exciting journey into ecosystems. Understanding the delicate balance, energy flow, and human impact on these systems will deepen their appreciation for the natural world.







We have successfully completed the Molecular Biology topic in our IB Biology course! Over the semester we have delved into the fascinating world of photosynthesis and cellular respiration, exploring the intricate mechanisms that sustain life.

To enhance our understanding, we conducted captivating labs on both subjects. In the photosynthesis lab, we investigated the factors affecting the rate of oxygen production, while the cellular respiration lab allowed us to explore the relationship between temperature and the rate of respiration. Next term we will be going a bit bigger and looking at cells: what makes life, LIFE. Don't forget to come to the Year 11/12 Science Fair display room to see the cell models.

*Kim Steimer*



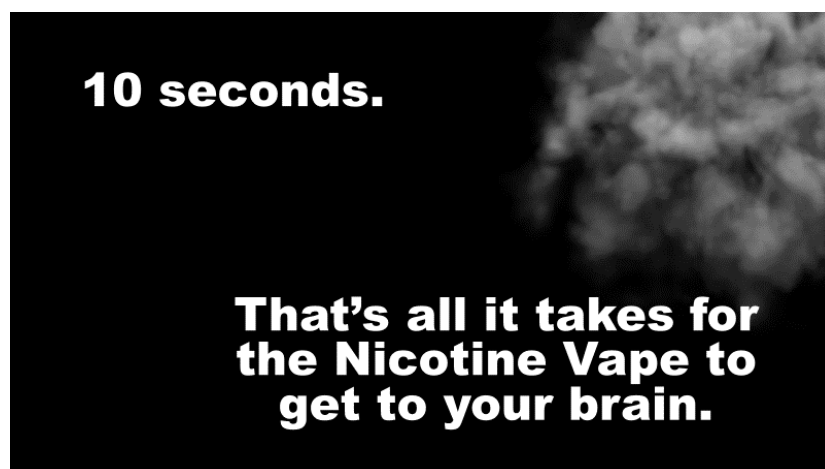




## Psychology

To cap off an exciting term in Year 12 WACE Psychology, students have been using behavioural science to analyse people's behaviour during the Covid-19 pandemic and their response to Covid-19 vaccinations. The effect of conformity and group polarisation on

people was significant across the world with the topic still being one of taboo at many family gatherings.



Persuasive communication techniques were also examined and used by students to create an anti-vaping campaign targeting adolescents and addressing the mismatch in beliefs and behaviours (Cognitive Dissonance) around Vaping. The use of psychology as a delivery tool in advertising can be seen in the students' work, demonstrating the use of fear and health issues as a motivator, and simplicity in advertising with an attention-grabbing headline.



Year 11 WACE Psychology students finished the term with being asked to question herd behaviours through the analysis of several psychological experiments. Perhaps the most entertaining experiment being group conformity in a surgery waiting room – check out the link below.

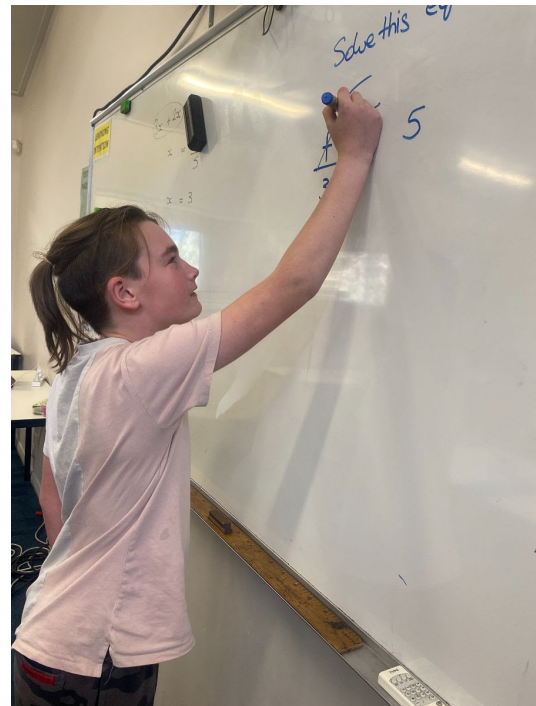
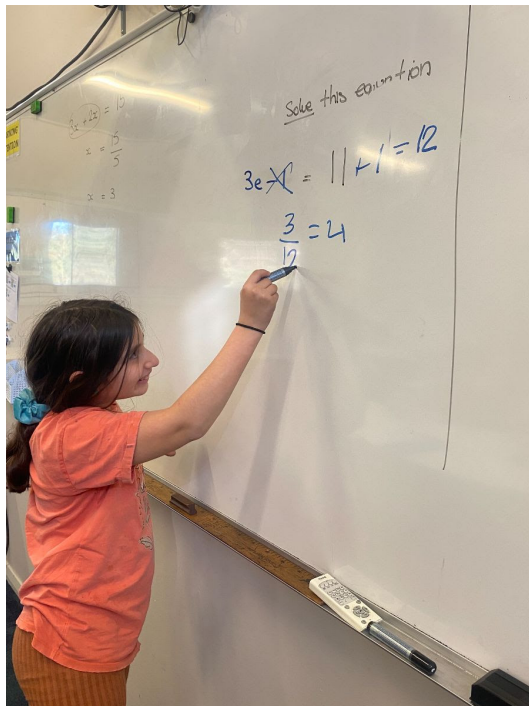
### Brain Games Waiting Room Conformity

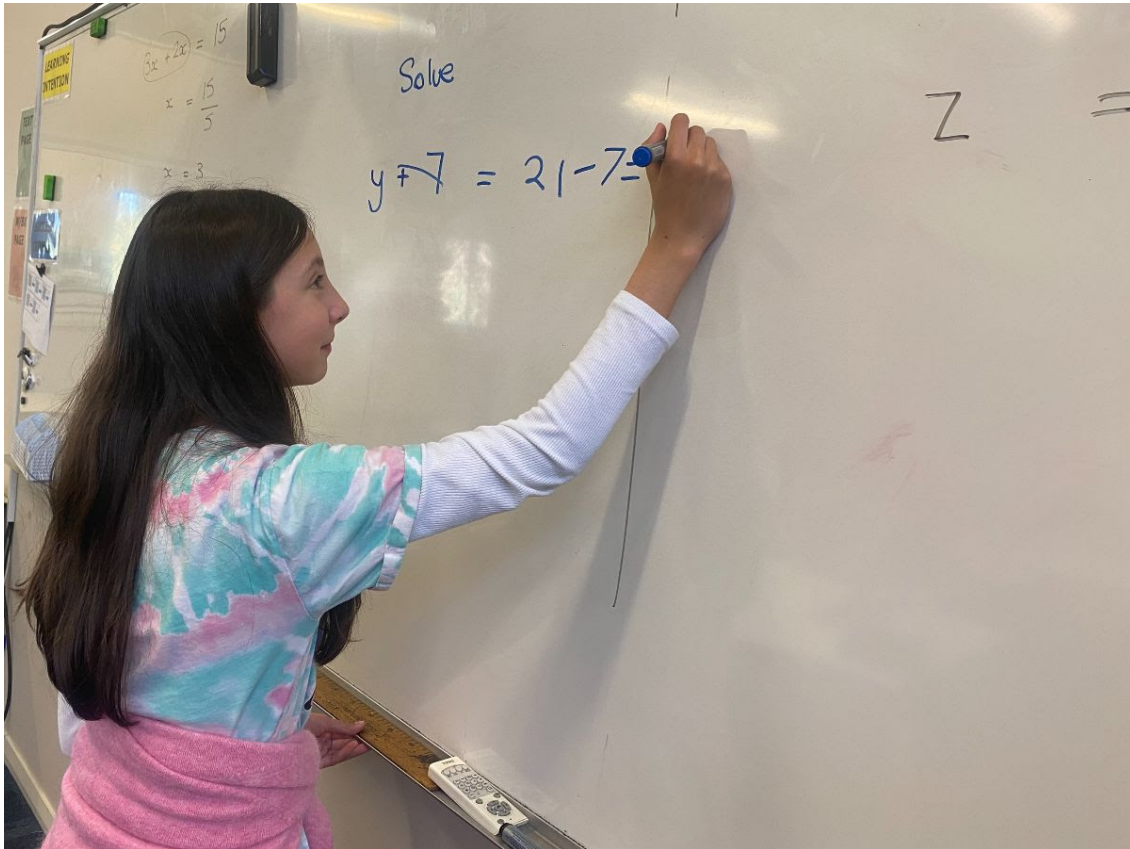
Students were able to dive deeper into the effects of Bystander Behaviour and Diffusion of Responsibility within Herd Conformity and apply them to themselves in the real-life context of school and social settings.

*Selenee Van Der Steen*

## Maths

Mallee students have been learning about mathematical equations; how they are solved, what they are used for, and just how many types there are (lots of them!). Many of our students have been experiencing the joys and frustrations with trying to solve them, and it builds patience as much as critical thinking and logical thinking pathways.





Equations will be with the students all the way through Secondary School, and our Mallee students know that they will appear regularly, sometimes disguised as formulae used in solving problems within topics like measurement and coordinate geometry. The students pictured above are shown delighted with solving their equations. The letters are the variables representing unknown numbers and the language of communicating and solving the problems is Algebra. The Mallee students have shown little fear of the Algebra, enjoying time at the board to demonstrate their skills.

*Paul Gillespie*



# Primary School



## Wattle

Play-based learning is an important facet of the Wattle learning community. As children engage in play, they unknowingly problem-solve, collaborate, persevere, compromise, and cooperate with others. They follow their interests and extend their social, emotional, physical, and academic knowledge.

During the morning work cycle, play is interspersed as the students engage in spelling games, memory games, literacy activities such as the Montessori Farm, pattern making, 3D shape creation, number games, and much more to consolidate their skills and knowledge.







Investigative Play occurs twice a week in Wattle. The students set up a variety of stations which relate to the learning topics and interests of the students. One of the most popular tables is the 'writing table'. Students are incredibly keen to have a go at writing their own fiction and non-fiction books. They discuss topics to write about and create images to match.

At the engineering table, intricate towers are built and demolished. Items to construct with are considered, chosen, discounted, and reconsidered. Fine motor skills are pushed to the limit at the tinkering table and the sensory (playdough) table. Play allows children to develop their critical thinking skills, learn how to learn, adapt to change, and test out ideas.







Outside in nature, learning continues in the guise of play. Pipes and honkey nuts are suddenly a makeshift marble run. Why didn't the 'marble' make it down the pipe? What do we need to change? The height? The slope? A makeshift fire is created with logs, marshmallows are roasted! Delicious cakes and meringues are bought and sold! Trees are climbed, logs balanced upon, and monkey bars are hung on!







Thank you to all the families who have supported Wattle over the semester. Your actions and words of support are invaluable! Enjoy the holidays with your children, enjoy playing out in nature, dance in the rain and play in the mud!!! Make memories together!!! Childhood memories are the BEST!!!

*Natalie Boyd-Ratcliff*

---



# Marri

We have had a packed term here in Marri!

We visited SciTech in week six to help support the students' understanding of our work in Earth and Space Sciences this term. The students got to investigate the realities of what it takes to be a space explorer in the Astronaut Exhibit.

In the exhibit, they learnt how to communicate to mission control and had a go at some of the fitness, psychological, and mental tests that trainee astronauts would take. They also got to try a simulation space shuttle that takes you into space, and saw what it is like to live on a space station.





In Science this term, we explored weathering and erosion, undertaking an experiment where the students had to save their miniature lighthouses from physical erosion by building a wall out of found materials. They also explored chemical erosion by planning and conducting an experiment that compared the effect of water and vinegar on a piece of chalk. As the students predicted, the vinegar eroded the chalk at a much faster pace.





In Science this term, we explored weathering and erosion, undertaking an experiment where the students had to save their miniature lighthouses from physical erosion by building a wall out of found materials. They also explored chemical erosion by planning and conducting an experiment that compared the effect of water and vinegar on a piece of chalk. As the students predicted, the vinegar eroded the chalk at a much faster pace.

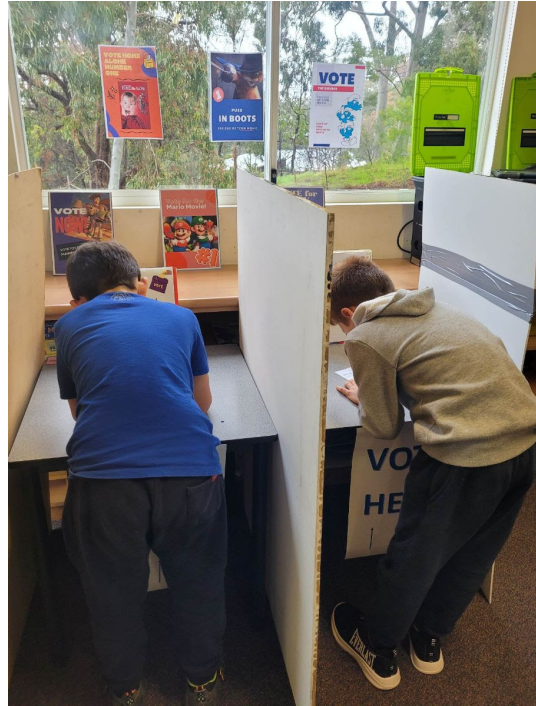




Lastly, we explored democracy and what it means to be a citizen of a democratic country, by exploring levels of government and voting systems. The students short-listed six movies for their end of term movie before designing a ballot so that they could cast a preferential vote.







Thank you so much for all the parents' continued support and involvement in special lunch and volunteering for our excursion, it is very appreciated. We hope everyone has a lovely school holiday.

*Caitlin Morey*

## Karri

Karri had an awesome excursion to the Perth Zoo. We went on the Aussie Adventure tour and learnt about how Australian native animals have adapted to their environment. The students also enjoyed touring the zoo in small groups and getting to see the wide-range of amazing animals. Here are some of their highlights:

- My favourite part of the zoo excursion was probably the crocodile, and also the squirrel monkeys and the bearded dragon. There were a variety of animals for people to view. There were also guides there who helped us find what we wanted to see. - Aiden H
- I saw a crocodile, and when we saw the painted dogs I made sheep noises and they came over to see if they could eat me. - Seb
- I liked the primate trail because of the capybaras. - Phoenix
- I liked the meerkats because it sat up straight - Harrison
- I really liked the numbats and the red panda. - Alexis
- I LIKE BOA CONSTRICTORS! - Marcus
- I liked the bearded dragon lizard and the snakes, especially the tiger snake. - Indianna
- Marcus and I both fell asleep on the bus back to school, it was very relaxing with some snoring to make it more relaxing. Then Katie showed us a picture of me & Marcus. I laughed & thought it was funny. - Marc









I would also like to take this opportunity to say a huge thank you to the students, parents, staff and Treetops community for the last few years. It has been my privilege to be the Karri teacher and I feel very fortunate to have graduated and had my first few years of teaching in the nurturing environment that is Treetops. Although I am sure the travel and adventures of Spain will make up for it, I will honestly miss coming to work at Treetops!

*Katie Simpson*





# Early Years



## Children's House

In a Montessori classroom, intentional play has a vital role in fostering the development and learning of young children. Intentional play refers to purposeful, planned activities that engage children in meaningful exploration and discovery.

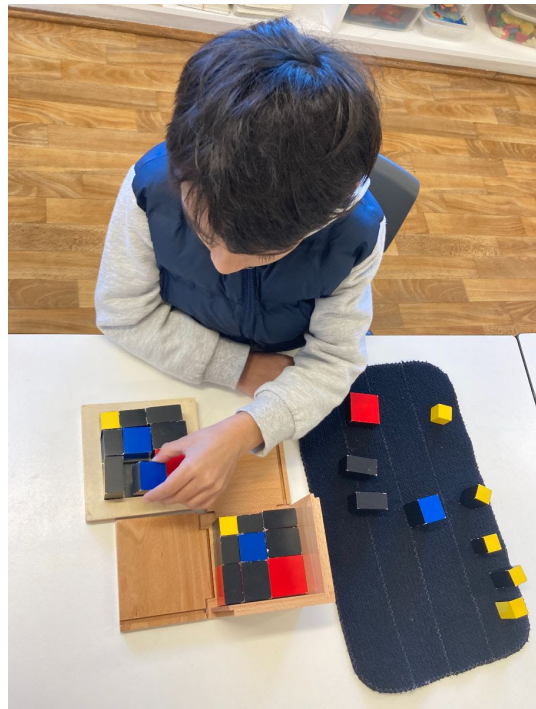




In Children's House, intentional play is carefully designed to align with the developmental needs of each child. The materials and activities provided are carefully selected to promote specific skills and concepts, such as fine motor development, sensory exploration, language acquisition, mathematical reasoning, and social-emotional growth.

Through this type of play, children are given the freedom to choose activities that capture their attention and challenge them at their individual level. Our roles are to observe and guide children's exploration, offering support and encouragement when needed. This approach encourages children to develop concentration, problem-solving skills, creativity, and a love for learning.





Intentional play in a Montessori classroom not only facilitates academic learning but also fosters the development of important life skills, such as cooperation, empathy, decision-making, and self-regulation.

*Anene Lamb*



# Specialist Subjects



## Japanese

What a productive semester it has been for learning Japanese! We have had exciting events, with Year 7&8 students going on an excursion to the Art Gallery and visiting a Japanese udon house for lunch. All Secondary students participated in the shibori experience, creating their own t-shirt (see Peter's article).



Marri and Karri students have worked diligently on creating their own books about their daily routines. Wattle have been writing kanji relating to family and Children's House performed a play for their Karri buddies. Looking forward to more learning adventures in Semester 2.

*Sharon Crossman*



---

## Art

This term, Dimity Gregson ran Shibori workshops for all of the Secondary students. Dimity is a local artist who attended Treetops back when it was a Lance Holt School. She first trained the Year 11&12 students, who then assisted in all of Secondary creating their own shirts. They were shown two different Shibori tie dye techniques to choose from (Arashi and Itajame).









The Year 11&12 students have also been working hard finishing their own art projects this semester. Their main focus has been drawing, painting and sculpture. They completed a sketchbook project, arts analysis task, reflective presentation on appropriation in art (Year 11's), along with their own creative artwork with a personal choice of subject and materials.





Year 7-10 students are nearly finished with their still life paintings. They started by studying colour theory and paint mixing, examined historical and contemporary still life paintings, and participated in observational drawing sessions. Students then let the paintings take on their own creative direction.



Marri and Karri students are finishing their linocut prints of the Noongar six seasons, and will be starting their DAF artwork when they return from the break.

*Peter Zylstra*



---

## Wellbeing

We are now officially half-way through the Wellbeing and Mental Health in Schools Pilot Project. This is being run by AISWA in conjunction with the Telethon Kids Institute. Our achievements so far:

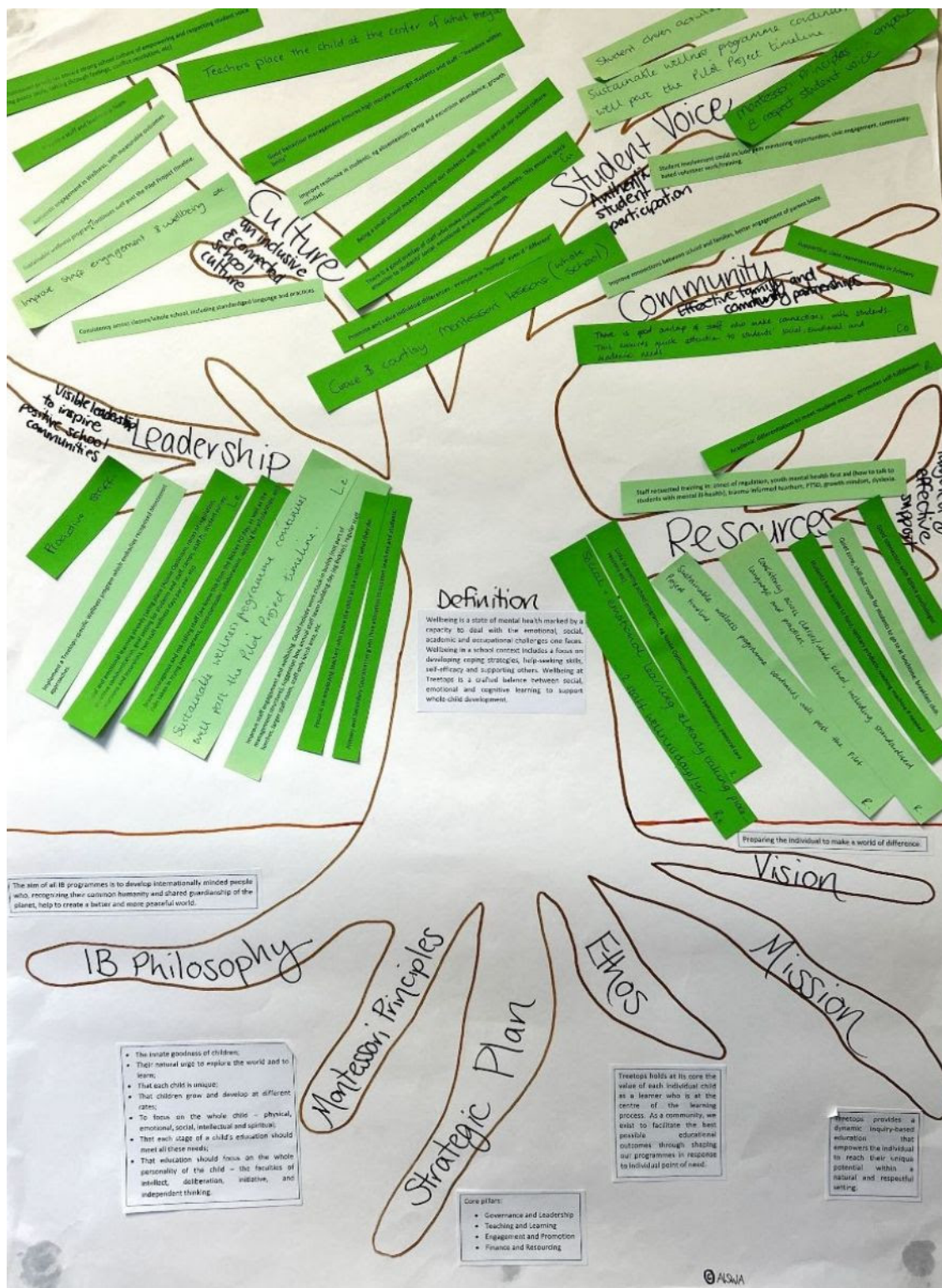
- We now have a dedicated Treetops Wellbeing Team, who meet twice each term.
- Staff completed a school readiness survey, to help identify factors that may influence the successful implementation of a whole school wellbeing program. This evidenced that Treetops is starting in a strong position, with staff and leadership recognising the importance of wellbeing in our school community.
- We have written a definition for Wellbeing at Treetops, and created a Wellbeing Framework which will form the structure for our whole school program. Staff contributed their ideas on current wellbeing activities and practices, as well as ideas for future goals.

Our current focus is choosing a Social and Emotional Learning (SEL) Program that suits our school needs. Evaluations on several programs have been completed and staff have given feedback on their experiences. The SEL program will be implemented in 2024.

Work is also underway on writing a Treetops Wellbeing Plan, ensuring that an evidence-based, whole-school wellbeing program continues long after the pilot project has finished.

*Sharon Crossman, Wellbeing Coordinator*





# Community News



**HOOPERS EVOLUTION**  
MIND BODY BUCKETS

## BASKETBALL SCHOOL HOLIDAY CLINIC

Week 1: 3rd to 5th of July  
Week 2: 10th to 12th of July  
3 day clinic | \$330  
John Septimus Roe, Mirrabooka

**REGISTER NOW**

[info@hoopersevolution.com.au](mailto:info@hoopersevolution.com.au)  
0404 153 223



YAHAVA SWAN VALLEY PRESENTS:

# **THE YAHAVA KOFFEWORKS HOLIDAY INTENSE TRAINING PROGRAM**

A hands-on barista training experience designed to give students key insights and training in the skills they need to become a barista. Our expert baristas will teach you how to brew the perfect coffee using the tools of the pros. Classes are kept to small sizes to ensure the best possible results, and certification is provided upon completion.

Additionally, all students that successfully complete this intensive course will get the opportunity to do one full extra day of work-experience in the Yahava KoffeeWorks Kafe as a junior staff member, reporting directly to the Café Manager.

Click [here](#) to find out more.

---

**\$70**  
Registration  
Fee



**3RD & 4TH  
JULY**

# SCHOOL HOLIDAY PROGRAM



## FUNDAMENTAL MOVEMENT SKILLS

**Fun activities filled with throwing, catching and fitness  
Recipients will receive a pack at the end of the clinic**

**REGISTER ON PLAYHQ VIA EASTERN HILLS NETBALL ASSOCIATION  
MUNDARING ARENA**

**5-8 year olds Monday 3rd July 10am-2pm  
9-11 year olds Tuesday 4th July 10am-2pm**

[easternhills.ado@gmail.com](mailto:easternhills.ado@gmail.com)





## Project Update #2 June 2023

SHIRE OF MUNDARING

# Mundaring Town Centre Revitalisation and Multi-Purpose Community Facility

## Project Overview

The Shire is committed to revitalising the Mundaring Town Centre through creation of a new Cultural Precinct and construction of a new Multi-purpose Community Facility (MPCF).

The MPCF project will consolidate the majority of existing community services, many of which are currently occupying facilities which are ageing and inefficient.

During the current stage of the project, the community and key stakeholders are:

- helping Council to determine exactly what services are to be provided in the MPCF
- informing the design of the new building(s); and
- establishing a vision for the new Cultural Precinct.

## Project Status

- Stage 1 (2017-2022)  
Preliminary planning
- **Stage 2 (2022-2025)**  
**Planning and design**
- Stage 3 (2025-2026)  
Detailed design
- Stage 4 (2027-2028)  
Construction
- Stage 5 (2028)



## Project Update

The Shire is actively engaging with community and key stakeholders to design the proposed Mundaring Multi-Purpose Community Facility (MPCF) and a reimagined Cultural Precinct in which the new facility will be built (between Sculpture Park and Craig Street).

- Building on an increasing understanding of community needs and aspirations for the Mundaring Town Centre, 50 members of the community worked in collaboration with the Shire's design consultants over 28 and 30 May. Initial concepts for the MPCF and Cultural Precinct were developed during this collaborative forum.
- These initial concept options will be refined by key stakeholders and a smaller group of community representatives over the coming weeks. Following this, broader community feedback will be sought via an online survey later this month.



## Upcoming Consultations

- June/July 2023  
**Community Survey  
Event Pop-ups**
- Late 2023  
**Naming Competition**

Interested community members are encouraged to follow the progress of this significant and exciting community project via our engagement portal  
[engage.mundaring.wa.gov.au](https://engage.mundaring.wa.gov.au)



7000 Great Eastern Hwy, Mundaring WA 6073

T: 9290 6666 E: [shire@mundaring.wa.gov.au](mailto:shire@mundaring.wa.gov.au)

[mundaring.wa.gov.au](https://www.mundaring.wa.gov.au)

[engage.mundaring.wa.gov.au](https://engage.mundaring.wa.gov.au)

[facebook.com/ShireofMundaring](https://facebook.com/ShireofMundaring)

[instagram.com/shireofmundaring](https://instagram.com/shireofmundaring)

## Gilbert's Fresh Support Our Schools Program

Gilbert's Support Our Schools (SOS) Program donates 1% of the money spent by you to your nominated school every time you shop at Gilbert's Fresh Market (stores in Midland, Willetton and Hilton). Treetops is part of this program - it is free and available to all customers, and you can sign up in-store.



**Terms & Conditions:**

1. Principal's permission is required for the school to participate
2. At least 5 supporters to sign up to the school

## Join our Support Our Schools Program (SOS)

Gilbert's Fresh Market will donate 1% of the money spent by you to your nominated school every time you shop with us.

Sign up at the checkout and simply present your SOS card for scanning each time you shop to earn funds for your school.

Available to all customers. Get your community involved and help our local schools.

**No restrictions on what schools use the funds for -**

- new resources & equipment
- improving school grounds and amenities
- subsidising excursions & camps for all to attend etc



**Open 7 days**  
[www.gilbertsfresh.com.au](http://www.gilbertsfresh.com.au)